



Jātnieku ielā 84 / Planning data

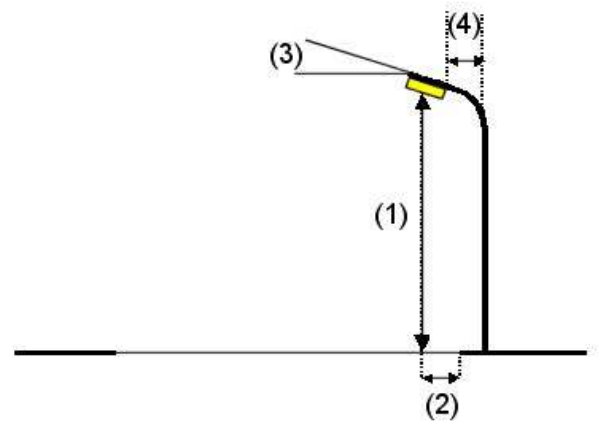
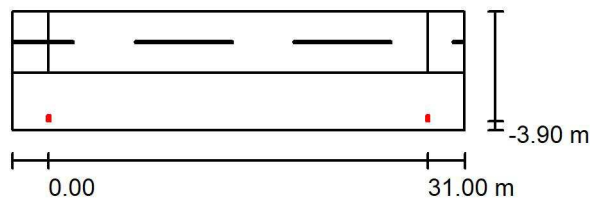
Street Profile

Pagalms (Width: 5.000 m, Number of lanes: 2, tarmac: R3, q0: 0.070)

Autostavvietas (Width: 4.650 m)

Maintenance factor: 0.91

Luminaire Arrangements



Luminaire:	PHILIPS 910925866690 BGP281 T35 LED60-4S/740 PSD DM11 FG
Luminous flux (Luminaire):	5230 lm
Luminous flux (Lamps):	6000 lm
Luminaire Wattage:	36.1 W
Arrangement:	Single row, bottom
Pole Distance:	31.000 m
Mounting Height (1):	10.000 m
Height:	10.011 m
Overhang (2):	-3.560 m
Boom Angle (3):	3.0 °
Boom Length (4):	1.500 m

Maximum luminous intensities

at 70°: 544 cd/klm

at 80°: 142 cd/klm

at 90°: 0.23 cd/klm

Any direction forming the specified angle from the downward vertical, with the luminaire installed for use.

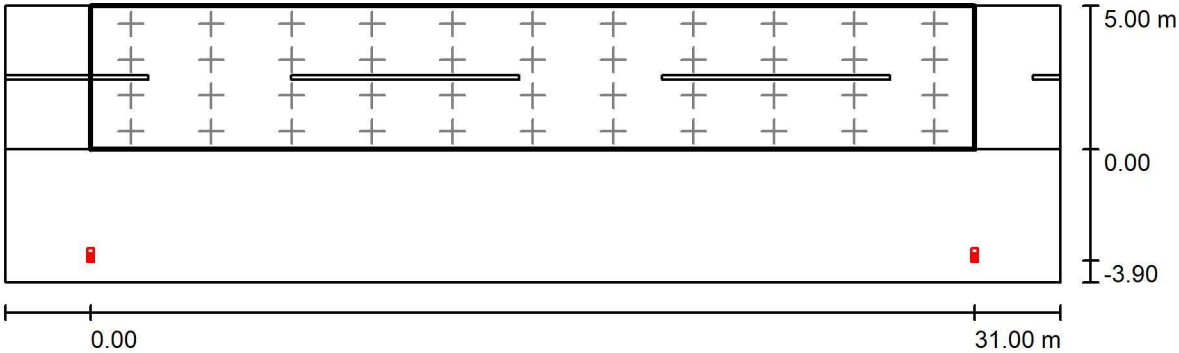
No luminous intensities above 95°.

Arrangement complies with luminous intensity class G2.

Arrangement complies with glare index class D.6.



Jātnieku ielā 84 / Ceļš / Results overview



Maintenance factor: 0.91

Scale 1:265

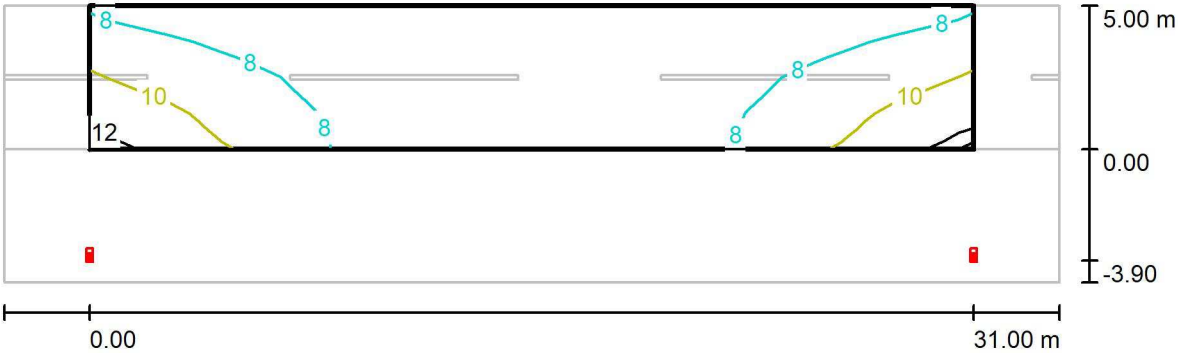
Grid: 11 x 4 Points
Accompanying Street Elements: Pagalms.
Selected Lighting Class: CE5

(All lighting performance requirements are met.)

Calculated values:	E_{av} [lx]	U0
Required values according to class:	7.82	0.79
Fulfilled/Not fulfilled:	≥ 7.50	≥ 0.40
	✓	✓



Jātnieku ielā 84 / Ceļš / Isolines (E)



Values in Lux, Scale 1 : 265

Grid: 11 x 4 Points

E_{av} [lx]	E_{min} [lx]	E_{max} [lx]	u0	E_{min} / E_{max}
7.82	6.17	12	0.789	0.533